

Datum: 2024-03-27

Dokumentansvarig tjänsteperson: Stefan Persson Tillväxt och utvecklingsavdelningen kommunledningskontoret

Följs upp: 2025-03-25

City portrait of Tomelilla

**Sustainable development and
quality of life progress report.**



**Tomelilla
kommun**

Translation: Translated with www.DeepL.com/Translator (free version)

Illustrations and images unless otherwise stated: Tomelilla Municipality

Author: Jonna Olsson, Department of Growth and Development

Table of contents

1	Introduction	4
2	Sustainability work in Tomelilla	4
2.1	The Quality-of-life program.....	4
2.2	Doughnut economics	5
2.3	From theory to finalized city portrait	6
3	Unrolled Doughnut	10
3.1	Ecological ceiling	10
3.2	Social foundation	11
4	The doughnut	12
5	Good examples	13
5.1	Ecological ceiling	13
5.1.1	Climate change.....	13
5.1.2	Consumption.....	13
5.1.3	Conserving water resources	14
5.1.4	Land use.....	14
5.1.5	Biodiversity	14
5.2	Social foundation	15
5.2.1	Food	15
5.2.2	Health	15
5.2.3	Education.....	16
5.2.4	Income & work	16
5.2.5	Peace & justice	17
5.2.6	Influence	17
5.2.7	Social equality.....	17
5.2.8	Housing	17
5.2.9	Network & community	18
5.2.10	Energy.....	18
6	Moving forward	19

1 Introduction

"Sustainable development is development that meets the needs of the present without compromising the ability of future generations to meet their own needs." - Brundtland Report 1987.

The administration works daily, both on a large and small scale, to achieve a sustainable future. The work is important for the development of the entire municipality and has therefore been intensified in recent years through collaboration both within the administration together with our local business community, our associations and our residents. However, we also collaborate with municipalities, researchers and other actors both nationally and internationally.

The report presents a selection of the sustainability work underway in the administration, as well as analyses of the current situation. First, the policy documents, working methods and objectives that guide the sustainability work are presented. To show how we move from words to action, important key figures have been selected that show the development of the work. We also discuss good examples of the sustainability work that has been done during the year. This is followed by suggestions for a focus for the coming year.

For this year's sustainability report, the structure has been further developed and the method for collecting data has been reworked. We are the first municipality in Sweden to work with the so-called doughnut model (Doughnut Economics) This year we are pleased to present Tomelilla's first municipal report using the doughnut model as a tool. To achieve a sustainable future, the municipality needs to help reduce climate impact and reduce the effects of climate change while creating the conditions for all residents' quality of life. The doughnut model is a good tool to include all aspects and get an overview of what needs to be focused on in the future. This work will continue in 2024 to create a simpler process and clearer communication about the municipality's sustainability work.

2 Sustainability work in Tomelilla

2.1 The Quality-of-life program

The Quality-of-life program is the administration's main document for the environment and public health. The purpose of the program is to provide the conditions to raise awareness, analyze and strengthen what contributes to the residents, in the present and future, being able to create quality of life based on their conditions and wishes.

To gain a broad understanding of what we call and measure as quality of life, it is important that the Quality-of-Life Program takes into account and considers several elements. The World Health Organization (WHO) defines quality of life as "an individual's view of his or her life based on the culture and values the individual has and lives by, in relation to personal goals, expectations and norms". What quality of life means to an individual is personal and can change depending on where they are in life. In addition, the program also needs to take into account the quality of life for future generations, both in Tomelilla and in our world.

The program is built on four will directions that link to a number of focus areas that we want to improve (We therefore want) and priorities (How we do this). Concrete measures and activities are not identified, but it is a support for the entire municipality; all activities in the administration must consider the program in their business plans based on their assignments.

At the end of 2023, a climate program was also adopted in the municipality. Together, the Quality-of-Life Program and the Climate Program will create a good foundation whose purpose is to achieve a sustainable transition where both the climate and our residents' well-being and quality of life are central. No one should be left out or disproportionately affected by the changes being made. The Quality-of-Life Program is revised every mandate period and an annual municipal report is made to follow the work with the Quality of Life Program.

2.2 Doughnut economics

The concept of sustainable development integrates the three dimensions of sustainability: social, environmental and economic. The basic thesis of the doughnut economic model is that the economy is a means to an end where humanity thrives (social foundation) without exceeding the limits of the planetary boundaries (ecological limit). To do this, we need to look at the economy in a slightly different way, we need new glasses.

The doughnut economics model is based on seven principles:



Embrace the 21st century goal. Aim to meet the needs of all people within the means of the planet. Seek to align your organisation's purpose, networks, governance, ownership and finance with this goal.



See the big picture. Recognise the potential roles of the household, the commons, the market and the state – and their many synergies – in transforming economies. Ensure that finance serves the work rather than drives it.



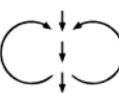
Nurture human nature. Promote diversity, participation, collaboration and reciprocity. Strengthen community networks and work with a spirit of high trust. Care for the wellbeing of the team.



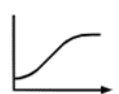
Think in systems. Experiment, learn, adapt, evolve and aim for continuous improvement. Be alert to dynamic effects, feedback loops and tipping points.



Be distributive. Work in the spirit of open design and share the value created with all who co-created it. Be aware of power and seek to redistribute it to improve equity amongst stakeholders.



Be regenerative. Aim to work with and within the cycles of the living world. Be a sharer, repairer, regenerator, steward. Reduce travel, minimize flights, be climate and energy smart.

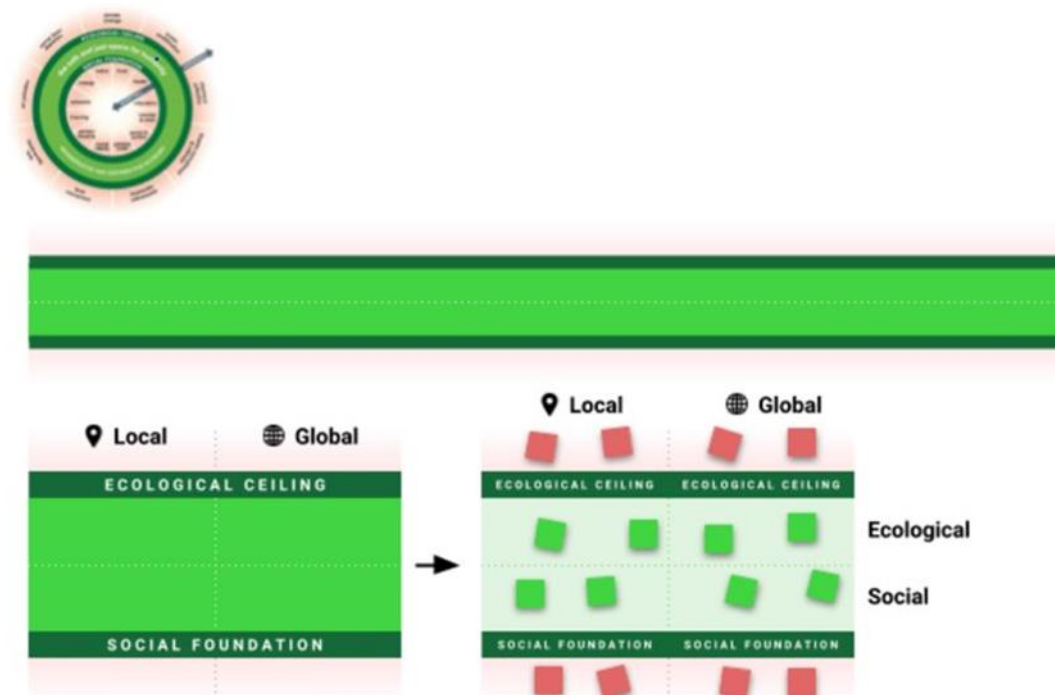


Aim to thrive rather than grow. Don't let growth become a goal in itself. Know when to let the work spread out via others rather than scale up in size.

When working on these principles, we must not forget to be strategic. Go where the energy is - but always ask whose voice is left out. Balance openness with integrity, so that work spreads unhindered by sharing learning and innovation.

2.3 From theory to finalized city portrait

The first step in the process has been an analysis to see how cities and regions around the world have created their portraits. Inspiration was drawn from Amsterdam and Grenoble, among others. In the spirit of open design and sharing, dialogue was held with the Doughnut Economics Action Lab (DEAL), Copenhagen, Bad Nauheim, and others.



DEAL, Unrolling the Doughnut (doughnuteconomics.org)

To move from words to action, the doughnut is unrolled. The social foundation is seen at the bottom and the ecological roof at the top. Then it is also divided into local and global, resulting in four lenses.

In each lens, it is then divided into different headings that become the pieces of cake in the rolled-up doughnut. Each heading defines the local and international targets to be worked towards. Work started in the sustainability report for 2022. Below you will find the local lens for the ecological ceiling. Local targets from Quality-of-life program and global goals from the 2030 Agenda.



This is Tomelilla's local lens for the social foundation with local goals from the Quality-of-Life Program and international goals from Agenda 2030.



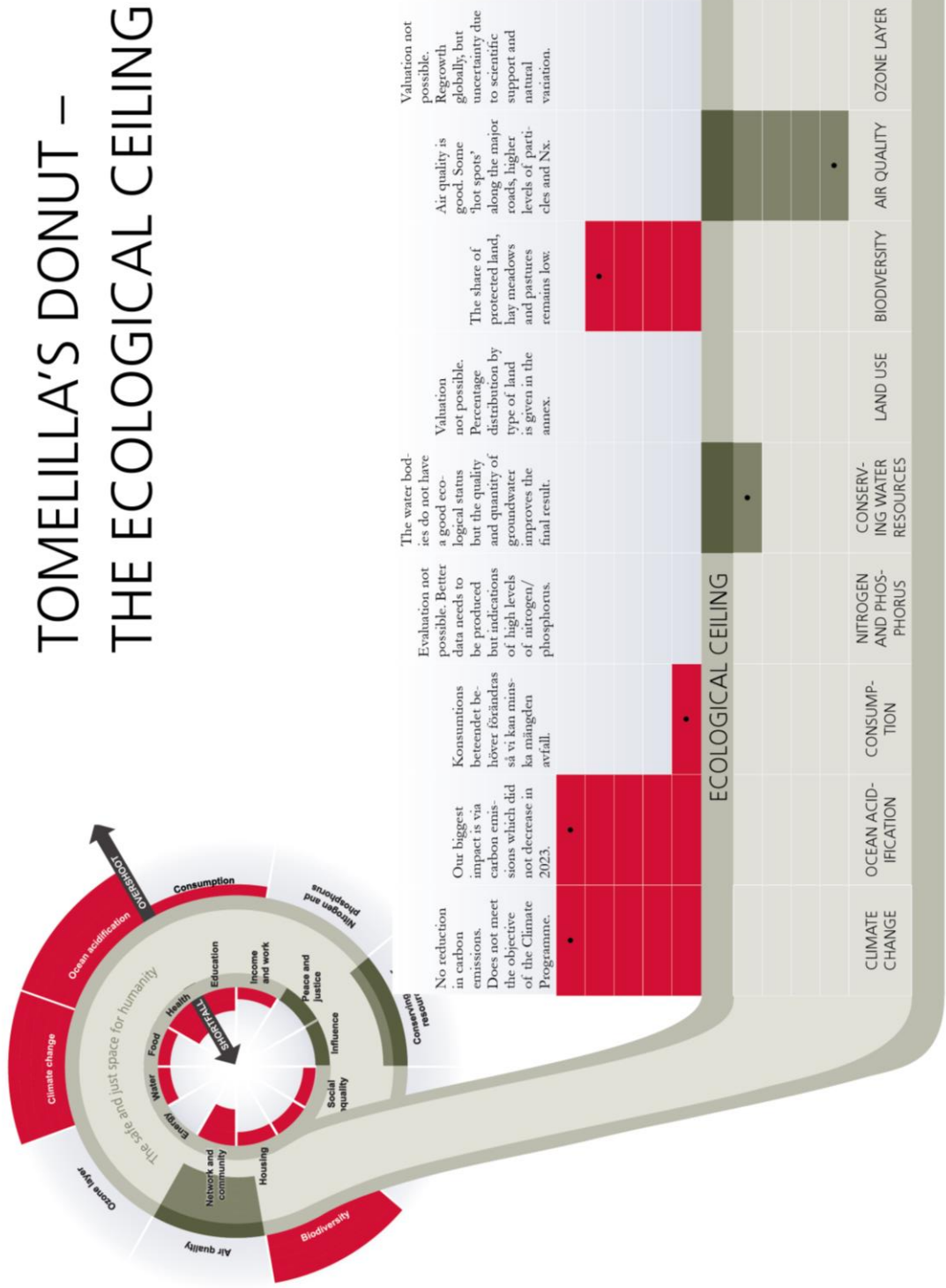
To evaluate how close the municipality is to achieving the goals, key figures had to be identified. In consultation with officials from various parts of the administration and other experts, it was determined which statistics would then be evaluated against the municipality's goals and/or international goals. The evaluation is made on a scale from minus five to plus five.

5	Plus one to plus five are inside the doughnut and the objectives are fully or partially achieved.
4	
3	
2	
1	
0	Zero means that the work is going in the right direction but the objectives have not been achieved.
-1	Minus one to minus five means a result outside the doughnut.
-2	
-3	
-4	
-5	

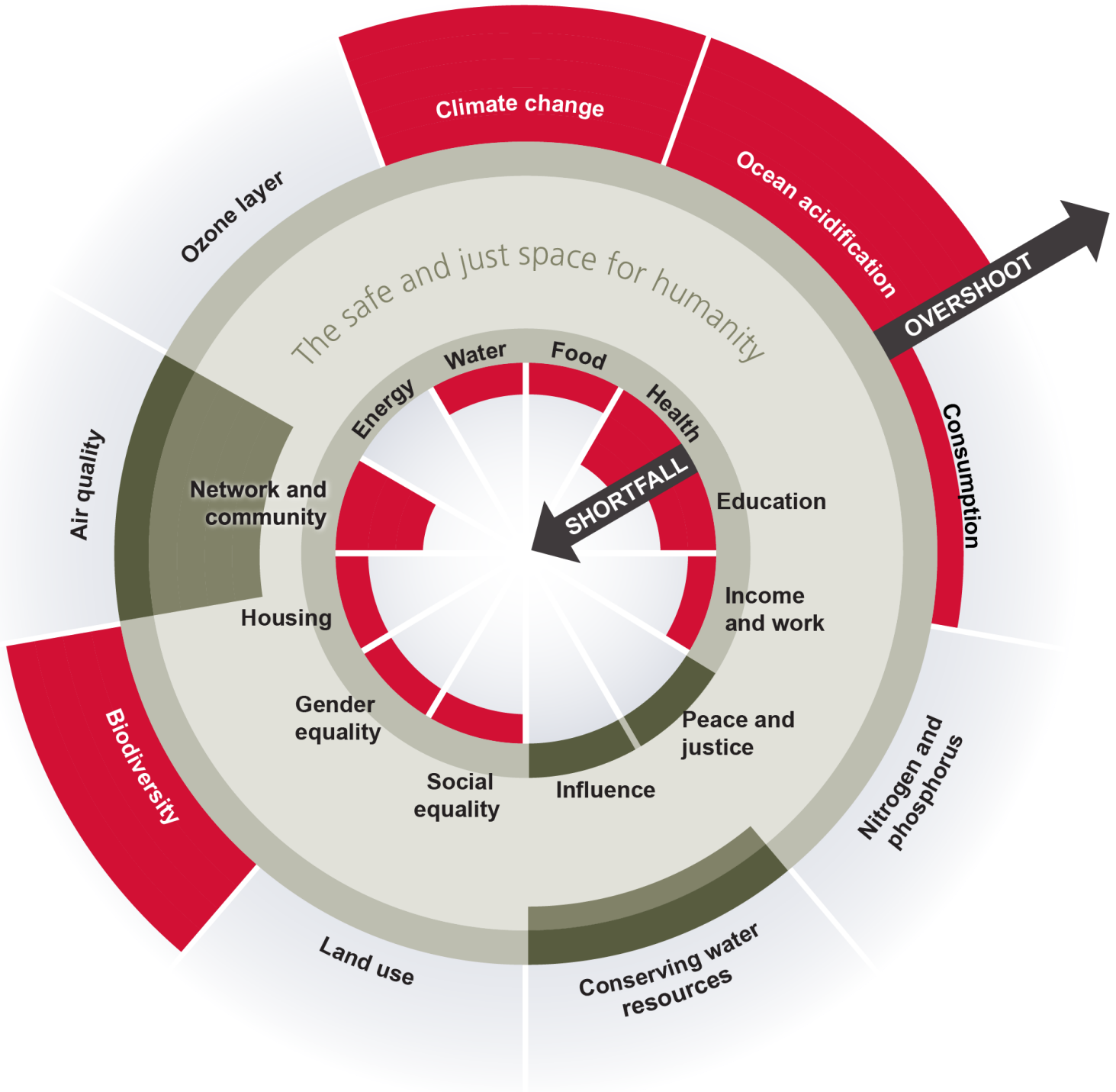
The key indicators and how they have been assessed are presented in the annex. Headings and indicators are evaluated annually and can be changed based on developments, needs and research.

3 Unrolled Doughnut

3.1 Ecological ceiling



4 The doughnut



5 Good examples

5.1 Ecological ceiling

5.1.1 Climate change

Tomelilla took an important step towards a more sustainable future when the City Council decided in December to adopt the Climate Program 2024-2045. The program sets clear and measurable targets to achieve net zero greenhouse gas emissions by 2045. As checkpoints along the way, seven milestones have been set until 2030. The program is intended to provide guidance to the municipality's committees and wholly owned companies and to inspire stakeholders and Tomelilla's residents.

5.1.2 Consumption

Last summer, Tomelilla konsthall, the Hasse and Tage Museum and the square in Tomelilla hosted Peter Johansson's major art project Peter Picasso, which was a tribute to the movie The adventures of Picasso. When the exhibition closed at the end of August, the square in Tomelilla was still adorned with Johansson's beautiful creation. The idea was born to preserve and reuse the material into something that Tomelilla can continue to enjoy. With the help of Finsnickaren på Österlen, pumpkins of different shapes and sizes have been sawn. Preschool children and the participants at daily activities have painted on these from their own imagination. The pumpkins were placed in several places in Tomelilla municipality by young people from Soffta leisure center.



Other things that have been done in the different activities to reduce the impact of our consumption include:

- Electronic scrap is recycled.
- The culture and leisure department have held programs for the public regarding recycling, clothing exchange days and self-catering.
- The Soffta leisure center is part of the project "A good life" together with Coop in Tomelilla, where food that would otherwise be thrown away is made into good meals.
- Outdoor swimming pools have been adapted to reduce the consumption of chemicals in connection with renovation.
- Continued work to reduce food waste.

- When Brösarp school built to be able to conduct more teaching outdoors with greenhouses and opportunities for cultivation, a lot of reused materials were chosen, such as sinks, sand filters, paving stones of various kinds, mobile home garages, benches, etc.

5.1.3 Conserving water resources

As mentioned earlier, Brösarp school chose a lot of recycled materials when they expanded to increase the possibility of outdoor teaching. They also chose to enable "reuse" of the rainwater. By letting the collected rainwater go through sand filters, it can then be pumped up and used in the gardens that the gardening teacher and the pupils cultivate.

5.1.4 Land use

As the first municipality in the world, Tomelilla will plan a new school and develop a larger area around the school based on the principles of the doughnut economics model. The area includes Kastanjeskolan, Österlenbadet, arable land, open stormwater solutions and more. During the fall, it became clear that When!When! together with Wingårdhs will help the municipality develop a master plan that takes into account both the social foundation and the ecological roof. The work is led by Jenny Grettve, who recently won Sweden's largest design prize for system transformation.

5.1.5 Biodiversity

NaturFokus AB has, on behalf of Simrishamn, Sjöbo, Tomelilla and Ystad municipalities, carried out an inventory of giant hogweed along selected stretches of Tommarpsån, Verkaån, Nybroån/Fyleån and Vollsjöån. The inventory took place in 2021 and 2022. The results show that the species has a very widespread distribution along all water bodies. Giant hogweed is an invasive species that spreads quickly and competes with other vegetation. The plant thrives in moist soil and likes to spread its seeds via waterways.

In 2022 and 2023, the Streets and Parks department has created a test bed for meadow flowers and tall grass on municipal surfaces. The test bed consists of an area that has been left to grow freely and an area opposite where different meadow seed mixtures have been sown. The next stage of the test is to use the seeds from the meadow on the "free-growing" area to test how to spread meadow flowers on more areas. Areas with tall grasses and meadows have been shown to increase the abundance of a variety of plants and insects, as well as increasing the soil's ability to absorb water during rainfall. By working with test beds like this the Streets and Parks department hopes to gather knowledge and use the solution in more places in the municipality.

5.2 Social foundation

5.2.1 Food

At the end of the year, the first delivery of locally produced food from Mylla Mat arrived. The agreement with Mylla will be an important piece of the puzzle in our long-term efforts to increase the proportion of locally produced food in our operations. Mylla is a platform where producers set their own prices and continue to own their brand. This removes intermediaries and enables smaller producers to deliver to the municipality. The agreement is municipality-wide, which enables all businesses to order from Mylla. Primarily it will be delivered to the kitchens in schools and elderly care as well as home economics teaching.

5.2.2 Health

As part of the municipality's efforts to create conditions for a good quality of life, several different places that encourage movement and activity are being improved and developed. For example, outdoor swimming pools have been made accessible and a new outdoor gym has been built in Brösarp. In Kronoskogen, the trails have been improved with new lighting and markings as well as improved surfaces, which has increased accessibility to the beautiful forest.



Ancient monument: remaining stone in the eastern part of the area.

Security is a basic prerequisite for quality of life. The results of the National Board of Health and Welfare's 2023 user survey show increasing security, high confidence and good treatment in home care services and retirement homes. The questionnaire used in the user survey is answered by people who either have home care services or live in a retirement home. This year the response rate was higher than last year, which is a positive development. The proportion who feels safe in the retirement homes has increased. The same applies to trust in the staff and satisfaction with the activities. The proportion who are satisfied with the home care service in general has increased and the rating for treatment is also high. A larger proportion than last year believe

that they can get in touch with home care staff when needed and the vast majority think that staff have enough time to carry out their tasks.

5.2.3 Education

The municipality cooperates with Save the Children within the framework of a five-year non-profit public partnership (IOP), "Good prospects for all children in Tomelilla". The target group for this project is children in grades four to seven with repeated school absences of more than 15 percent that, according to the assessment, cannot be easily explained by temporary or chronic illness. Cooperation will lead to better prospects for the target group by increasing their school attendance. In the longer term, the aim is to increase the number of ninth graders with basic upper secondary school qualifications. In the 2021/2022 school year, just under 50 percent of all students in grade nine were reported to have achieved the knowledge requirements in all subjects and just over 70 percent achieved eligibility for the upper secondary school's vocational program according to the Swedish National Agency for Education. Save the Children carried out an initial survey in 2023 with conclusions and recommendations for further work. The survey included dialogue with more than 100 children and young people in the municipality. Work with the target group will begin in 2024.

In 2023, Kastanjeskolan received the School for Sustainable Development award. In connection with this, thoughts were raised about how the work could be developed together with the students and the idea of a sustainability council emerged. The focus of the council is to create "sustainable youth" and three of the global goals have been chosen as special focus areas: gender equality, good health and well-being, and combating climate change. The first meeting took place in the fall with a gathering of students from all three grades (7-9) where the students got to think about how the work at the school can be developed and what needs to be done. These thoughts will pave the way for future work.



5.2.4 Income & work

Following an employee survey, the finance department has worked on its work environment. Based on the high workload, efforts have been made to find simplifications, smarter solutions and personal awareness in order to make things easier for each other.

Every year, the credit information company Syna awards the Best Growth prize to the municipality in each county where companies are growing best. Syna reviews the financial statements of all Swedish limited companies, and the award goes to the municipality with the highest proportion of companies that are hiring new

employees, increasing their turnover and making a profit. The business community in Tomelilla takes fourth place among Skåne's 33 municipalities.

5.2.5 Peace & justice

During week 44, a joint authority inspection took place at several companies in Tomelilla. The aim was to tackle workplace crime on a broad front. Participating authorities in the inspection in Tomelilla were the local police, the border police, the Swedish Work Environment Authority, the Swedish Public Employment Service, the Swedish Tax Agency, SÖRF (firedepartment), the Ystad- Österlen Region Environmental Association, the Swedish Gender Equality Authority and Tomelilla Municipality (coordinating with the police).

5.2.6 Influence

A citizen's initiative by a student turned into a multi-arena at Smedstorp school. Vega likes to play football during breaks. But as long as the field in the schoolyard was asphalt, there was almost always someone scraping their knees or ripping their pants on the hard surface. So Vega, then a fourth grader and member of the student council, wrote a citizens' initiative. She wanted grass and real goals instead. The student council, students and school staff were then involved all the way and have been able to design their schoolyard, which now includes a multi-arena where you can play football, basketball and bandy without scraping your knees.

5.2.7 Social equality

As a conclusion to the work with the recovery bonus, all employees in the Support and Care department had a joint activity on norms, values and treatment from an LGBTQI+ perspective. Žana Dončić from RFSL Skåne held the lectures where she trained in relevant concepts, the health situation of the LGBTQI+ group, legislation and held discussions on what good treatment can look like based on the Support and Care department's mission.

5.2.8 Housing

In the spring, Tomelilla municipality announced an architectural competition in collaboration with Architects Sweden and Atelier 01 arkitektur. The site that architectural teams had to compete to design is the Tegelbruk area in Ullstorp, just southeast of Tomelilla town. The main question was how an area with housing combined with biodiversity can look and function in a so-called peri-urban environment. The winning entry was Mylla. Sunnerö Architects, which developed the proposal, is behind the entry. The motivation reads: "The winning proposal Mylla presents a clear concept for a small-scale, nature-oriented housing with an experience of community, security and living in a very unique environment in Tomelilla".



An overview of the Brickworks as designed in the winning proposal Mylla. Image: Visulent Architectural Visualization

5.2.9 Network & community

To increase accessibility, the municipality is constantly testing new channels to reach out to residents. From September 2023, you can chat with administrators in LSS and social psychiatry two times a week. In the chat, you can get advice and support, as well as information about the efforts the municipality offers, such as: activities, support in everyday life, housing support and personal assistance.

During the Best Festival 2023, over 5000 children and young people met art and creativity in 250 workshops at 90 locations throughout southern Sweden. Of course, Tomelilla art gallery was involved and had several events where both young and old could participate. All the events were inspired by the exhibition "Det var det det" by Leif Broberg. In the exhibition, you could listen to children's thoughts about art by scanning the QR codes attached to selected works of art. The "Reality or Fantasy" workshop started with a tour of the exhibition and then allowed participants to freely create a work of art inspired by reality or fantasy. On three separate occasions, participants could also come to the art gallery and use pens for textile and create their own portable artwork on a fabric bag.

5.2.10 Energy

Energy efficiency continues, including the replacement of street lighting with LEDs, which reduces energy consumption but also light pollution. New photovoltaic systems have also been installed, allowing the municipality to increase its production of renewable electricity.

6 Moving forward

- The quality-of-life program will be updated in 2024.
- The climate program was adopted in 2023 and the next step is to review the action plan and start planning to achieve the goals and integrate the program into the municipal portrait.
- KNIT - the climate network in Tomelilla is organizing a Climate Festival on 18 May where the municipality will be involved and talk about our sustainability work.
- Österlen's first visitor site focusing on the area's waterways will be completed in the fall of 2024. The visitor site will be located next to the Hallamölla waterfall. The purpose of the site is to raise awareness about water and increase knowledge about the waterways of Österlen.
- To break the link between economic growth and environmental degradation, municipalities need to change their purchasing practices. The project "SCOPE - Collaboration for Circular Processes and Economy" will begin in 2024 and will help to reduce municipalities' purchase-generated (Scope 3) emissions according to set targets and strengthen the link to the circular economy. In the project, Tomelilla collaborates with HUT Skåne, Malmö, Lund, Helsingborg, Kristianstad, Eslöv and Lomma.
- SustainGov is one of Vinnova, FORMAS and the Swedish Energy Agency's five new strategic innovation programs that will start in the spring of 2024. Tomelilla is part of the program office. The purpose of SustainGov is to solve the system problems in the public sector that have so far hindered the generation of long-term sustainable effects at the system and society level. The mission is to achieve, by 2035, a reformed public sector that holistically promotes and facilitates the health and well-being of all citizens regardless of geography and socio-economic status and ensures the sustainability transition of society within the limits of the planet.
- The project Kommunklar: AI chat for greater participation is being implemented in 2024 and explores how AI can be used to summarize and make accessible political protocols and meetings. The overall challenge the project addresses is how municipalities can increase the participation of residents from just being informed to being able to participate in an exchange to establish processes, decisions and influence the future of the municipality.
- The administration has been tasked with making Tomelilla a leader in gender equality. A cross-functional working group was established in the spring and will work mission-oriented to improve gender equality in the municipality.
- In 2023, work began on developing a decision support with the doughnut model as a tool together with Doughnut Economics Action Lab (DEAL), Bath & Northeast Somerset, Bad Neuheim, the Brussels Region and others. The decision support should be able to be used for service letters as well as for decisions on new projects and initiatives. For example, these could be

activities linked to the Climate Program's action plan. In spring 2024, a first pilot is expected to be tested in Tomelilla.